

- LL COMMENTS: G.C. TO COMPLY.
- G.C. TO FIELD VERIFY ALL DIMENSIONS ON SITE PRIOR TO WORK START. CONTACT MALL OPERATIONS MANAGER AND TENANT ARCHITECT WITH ANY DISCREPANCIES.
  - WATERPROOF MEMBRANE MUST BE WATER TESTED AND APPROVED BY ON-SITE OPERATIONS MANAGER.
  - IT IS THE RESPONSIBILITY OF THE TENANT'S ARCHITECT TO FIELD VERIFY DIMENSIONS, UTILITY LOCATIONS AND CONDITIONS PRIOR TO AND DURING CONSTRUCTION.
  - ADA COMPLIANCE: TENANT'S LEASED PREMISES MUST COMPLY WITH TITLE III OF THE AMERICANS WITH DISABILITIES ACT (ADA). COMPLIANCE WILL INCLUDE, BUT NOT LIMITED TO, THE DESIGN, CONSTRUCTION AND/OR ALTERATION OF THE LEASED PREMISES. UPON COMPLETION OF WORK, TENANT OR TENANT'S ARCHITECT MUST SUPPLY TO LANDLORD A LETTER, SATISFACTORY TO THE LANDLORD, STATING THAT THE LEASED PREMISES HAVE BEEN DESIGNED AND CONSTRUCTED IN ACCORDANCE AND ARE IN COMPLIANCE WITH THE ADA.
  - ALL FLOOR PENETRATIONS MUST BE SLEEVED AND SEALED LIQUID TIGHT
  - LANDLORD WORK WILL INCLUDE BULKHEAD, DEMISING WALL & NEUTRAL PIER RE-CONFIGURATION. IT IS RECOMMENDED THAT ARCHITECT / GC FIELD VERIFY THE ACTUAL DIMENSIONS AFTER LL WORK IS COMPLETED AND PRIOR TO CONSTRUCTION START.

- GENERAL
- LEASE LINE
  - MALL BULKHEAD ABOVE
  - CENTERLINE OF STOREFRONT ENTRY GRILLE
  - LOCATION OF SENSORMATIC SYSTEM. REFER TO ELECTRICAL DRAWINGS.
  - FLOOR OUTLET. REFER TO ELECTRICAL DRAWINGS.
  - FITTING ROOM PAGING SYSTEM BUTTON - REFER TO ELECTRICAL DRAWINGS FOR SPECIFICATIONS. REFER TO DETAIL M/A12.02 FOR INSTALLATION.
  - G.C. TO INSTALL INSULATION IN FURRING ALONG EXTERIOR WALL (MIN. R-13). REFER TO SPECIFICATIONS SECTION 072103
  - LEDGE ABOVE - REFER TO DETAIL G/M2.01 AND STRUCTURAL DRAWINGS.
  - TELEPHONE AND ELECTRICAL PANEL - REFER TO ELECTRICAL DRAWINGS.
  - BRUSHED STAINLESS STEEL SURFACE MOUNTED CORNER GUARDS - REFER TO SHEET A13.01 AND SPECIFICATIONS SECTION 102613.
  - ALL SYSTEM - REFER TO DETAIL D/A14.02.
  - HARDWARE STORAGE BIN - REFER TO DETAIL B/A14.02.
  - PLAN TUBE HOLDER - REFER TO DETAIL A/A14.02.
  - MUSIC / VIDEO SYSTEM - REFER TO DETAIL S/A14.01.
  - PROCESSING WORK STATION.
  - DOOR CHIME FOR NON-SALES DOOR. MOUNT ON NON-PUBLIC SIDE ONLY.
  - G.C. TO MAINTAIN MIN. 6" CLEAR AT EACH SIDE OF MOBILE SHELVING UNITS TO ANY OBSTRUCTIONS.

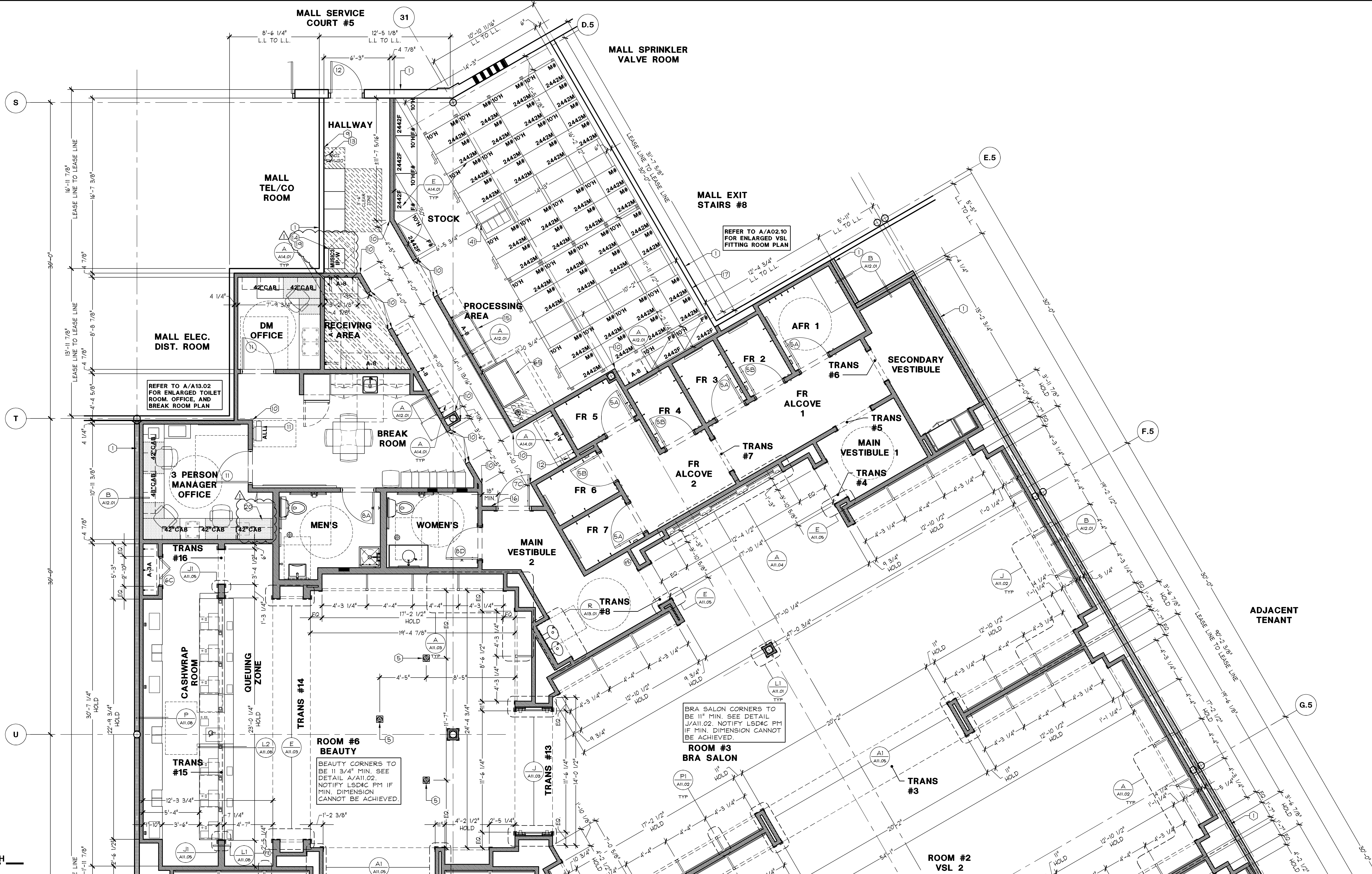
- PINK
- 20" X 24" SHELF FOR SECURITY MONITOR AND RECORDING EQUIPMENT - REFER TO A/A14.01
  - IP CAMERA SYSTEM RACK - REFER TO DETAIL S/A14.01.
  - IP COMPUTER STATION IN OFFICE. REFER TO ELECTRICAL DRAWINGS FOR REQUIREMENTS.
  - PAPER PANTY HOLDER. INSTALL W/ VENDOR SUPPLIED SCREWS AND GYP. BD. ANCHORS. REFER TO INTERIOR ELEVATIONS FOR MOUNTING HEIGHT.
  - PINK MARKETING STORAGE BIN - REFER TO DETAIL C/A14.02.
  - NOT USED
  - PINK FITTING ROOM MIRROR - REFER TO D/M10.01
  - PINK FITTING ROOM HOOKS - REFER TO G/M10.01 AND INTERIOR ELEVATIONS FOR MOUNTING HEIGHT
  - PINK CARD HOLDER - CENTERLINE MOUNTED AT 4'-0" A.F.F. AND EDGE OF HOLDER - 18" TO DOOR TRIM - USING VENDOR SUPPLIED GYP. BD. ANCHORS AND SCREWS (NOTE: OMIT THE ANCHORS WHEN INSTALLED AT 18" DOOR TRIM)

- VSL
- VSL TRANSITION FRAMED MIRROR - REFER TO DETAIL G/A11.01
  - FITTING ROOM HOOKS - G.C. TO PROVIDE IN-WALL BLOCKING - REFER TO DETAIL K/A11.05
  - FITTING ROOM MIRROR. REFER TO DETAIL C/A11.05.
  - NOT USED
  - DREAM STEAMER - REFER TO PLUMBING AND ELECTRICAL DRAWINGS.

REFER TO SHEET A00.04  
FOR GENERAL NOTES  
REFER TO SHEET A00.03  
FOR PARTITION SCHEDULE  
REFER TO SHEET A00.02  
DOOR SCHEDULE

LAY OUT ALL WALLS & CABINETS IN SALES AREAS FROM CENTERLINE OF ROOMS AND/OR TRANSITIONS. CORNER DIMENSIONS TO BE EQUAL U.O.N.

## CONSTRUCTION FLOOR PLAN KEYNOTES



## CONSTRUCTION FLOOR PLAN

1/4" = 1'-0"

A

**SHREMSHOCK**  
Shremshock Architects, Inc.  
1400 W. Campus Rd. Suite 150 New Albany, OH 43054  
T: 614.645.4500 F: 614.645.4501 | shremshock.com  
Timothy J. Shremshock, Architect | 131685

**Lbrands**  
STORE DESIGN & CONSTRUCTION  
Three Limited Parkway • Columbus, Ohio 43230  
Telephone: 614.415.7000 • Fax: 614.415.7349

THESE DRAWINGS AND SPECIFICATIONS ARE THE PROPERTY OF LBRANDS DESIGN & CONSTRUCTION, INC. (LBRANDS). NO PART OF THESE DRAWINGS OR SPECIFICATIONS SHALL BE REPRODUCED OR TRANSMITTED IN ANY FORM OR BY ANY MEANS, ELECTRONIC OR MECHANICAL, INCLUDING PHOTOCOPYING, RECORDING, OR BY ANY INFORMATION STORAGE AND RETRIEVAL SYSTEM, WITHOUT THE WRITTEN PERMISSION OF LBRANDS. ANY UNAUTHORIZED REPRODUCTION OR TRANSMISSION OF THESE DRAWINGS OR SPECIFICATIONS SHALL BE SUBJECT TO LEGAL ACTION. LBRANDS ASSUMES NO LIABILITY FOR ANY DAMAGE, LOSS, OR INJURY, INCLUDING CONSEQUENTIAL DAMAGES, ARISING FROM THE USE OF THESE DRAWINGS OR SPECIFICATIONS, WHETHER CAUSED IN WHOLE OR IN PART BY NEGLIGENCE, ACTIVE OR PASSIVE, OR OTHERWISE. LBRANDS DISCLAIMS ANY WARRANTY, EXPRESS OR IMPLIED, INCLUDING BUT NOT LIMITED TO THE WARRANTY OF MERCHANTABILITY AND FITNESS FOR A PARTICULAR PURPOSE. THE PROJECT IS SUBJECT TO CHANGE WITHOUT NOTICE. THE PROJECT IS SUBJECT TO CHANGE WITHOUT NOTICE. THE PROJECT IS SUBJECT TO CHANGE WITHOUT NOTICE.

PROJECT INFORMATION: 010500587  
VICTORIA'S SECRET  
NORTH POINT MALL  
SPACE ALLOCATION  
NORTH POINT CIRCLE  
ALPHARETTA, GA 30022

REVISIONS:  
1. ELITE CONSTRUCTION GROUP  
2. LANCE JACKSON, TX  
3. PHONE: 979-285-0712  
4. NOTE: THESE PRINTS HAVE BEEN  
5. REDUCED BY 50 PERCENT. SCALE  
6. WILL BE 50 PERCENT OF WHAT IS  
7. NOTED ON PLANS.

DATE ISSUED: 09/19/14  
DESIGNED BY: CS  
DRAWN BY: MJN  
CHECKED BY: JM

CONSTRUCTION FLOOR PLAN

DRAWING NUMBER: A02.02